

Plastic series

Push-button operators, momentary



8 LP2T B104



8 LP2T B204



8 LP2T B303

Push-button operators, momentary, with inscription



8 LP2T B1104



8 LP2T B2104

Color	Catalog number	Price \$ each
Flush (complete with mounting adapter), momentary.		
Black	8 LP2T B102	7.50
Green	8 LP2T B103	7.50
Red	8 LP2T B104	7.50
Yellow	8 LP2T B105	7.50
Blue	8 LP2T B106	7.50
White	8 LP2T B108	7.50
Extended (complete with mounting adapter), momentary.		
Black	8 LP2T B202	8.00
Green	8 LP2T B203	8.00
Red	8 LP2T B204	8.00
Yellow	8 LP2T B205	8.00
Blue	8 LP2T B206	8.00
White	8 LP2T B208	8.00
Guarded (complete with mounting adapter), momentary.		
Black	8 LP2T B302	13.00
Green	8 LP2T B303	13.00
Red	8 LP2T B304	13.00
Yellow	8 LP2T B305	13.00
Blue	8 LP2T B306	13.00
White	8 LP2T B308	13.00

Inscription	Color	Catalog number	Price \$ each
Flush (complete with mounting adapter), momentary.			
O	Black	8 LP2T B1102	9.00
	Red	8 LP2T B1104	9.00
I	Green	8 LP2T B1113	9.00
	White	8 LP2T B1118	9.00
II	Green	8 LP2T B1123	9.00
	White	8 LP2T B1128	9.00
STOP	Black	8 LP2T B1132	9.00
	Red	8 LP2T B1134	9.00
← ①	Black	8 LP2T B1142	9.00
	White	8 LP2T B1148	9.00
↑ ②	Black	8 LP2T B1152	9.00
	White	8 LP2T B1158	9.00
START	Green	8 LP2T B1163	9.00
	White	8 LP2T B1168	9.00
R	Blue	8 LP2T B1176	9.00
	White	8 LP2T B1178	9.00
RESET	Blue	8 LP2T B1196	9.00
← →	Black	8 LP2T B1502	9.00
→ ←	Black	8 LP2T B1512	9.00
Extended (complete with mounting adapter), momentary.			
O	Black	8 LP2T B2102	10.50
	Red	8 LP2T B2104	10.50
STOP	Black	8 LP2T B2132	10.50
	Red	8 LP2T B2134	10.50

① Arrow inscription can be used to indicate right or left.
 ② Arrow inscription can be used to indicate up or down.

Operational characteristics

- Ambient conditions:
 - Operating temperature: -13...+140°F (-25...+60°C)
 - Storage temperature: -40...+158°F (-40...+70°C)
- Any mounting position is allowed
- Degree of protection: IP65.

Materials

Polyamide and polycarbonate.

Mechanical endurance

Operating force: 1.76lb / 0.8 kg (operator).
 Mechanical life: 1,000,000 cycles.

Mounting adapter

Standard supply with the operator.
 Operators latch onto the mounting adapter with a simple rotation.

The adapter is fixed to the mounting surface by means of incorporated screws (Tmax = 5.3lbin / 0.6 Nm).

Contact elements

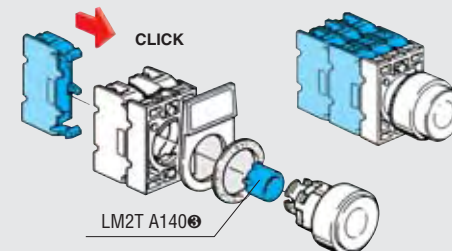
See page 7-17.

Catalog numbers: 8 LM2T C10 (1NO)
 8 LM2T CF10 (1NO Faston)
 8 LM2T C10A (EM)
 8 LM2T C01 (1NC)
 8 LM2T CF01 (1NC Faston)
 8 LM2T C01D (LB)

Contact elements snap onto the mounting adapter.

Up to 6 contacts can be fitted on the mounting adapter: 2 on the left, 2 at the center and 2 on the right.

To mount the auxiliary contacts in the center position, use the accessory: LM2T A140 (see page 7-21).



Ⓢ The action plug LM2T A140 for the center position is not standard supplied and must be purchased separately.

Certifications and compliance

UL listed for USA and Canada, file E93601.

Compliant with standards: IEC/EN 60947-1, IEC/EN 60947-5-1.